

CROSSTALK

LUTHERAN CHURCH
of the
RESURRECTION

WWW.LCRMARION.ORG

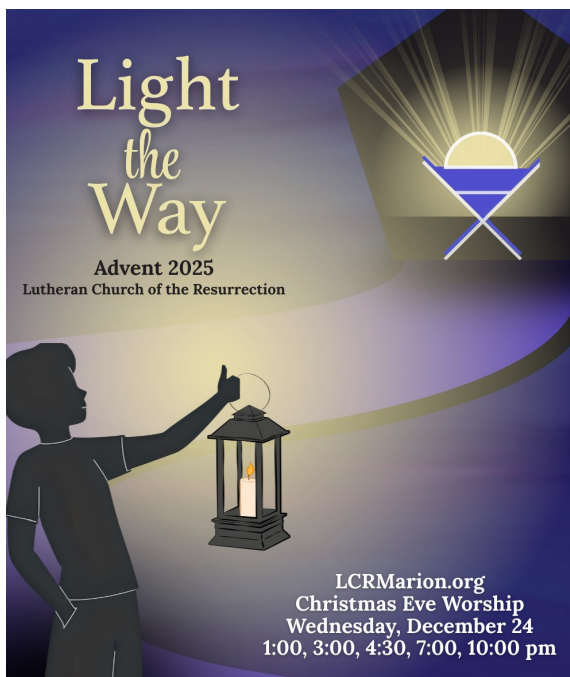
VOLUME 66, ISSUE 12 | DECEMBER 2025

O send out your light and your truth; let them lead me; let them bring me to your holy hill and to your dwelling. *Psalm 43:3*

Light the Way....

I have two images in my head: the first is the image of our Stewardship campaign - Ignite! As you know we have used the story of the road to Emmaus to think deeper about what it means to be stewards of the faith that has been passed on to us. The presence of Jesus ignited a fire in the hearts of those two disciples, and it is my prayer that the same can be said for all of us at LCR.

I was reminded the other day that Martin Luther compared good works and faith to fire and heat. The one just naturally flows from the other. I like that. We know that we are saved by grace through faith, the work of Jesus Christ on our behalf. And this good news flows out from us like heat from a flame to bless the world and love our neighbor as God has called us to do.



The other image I have in my head is the child holding up the lantern on our Advent devotional. Take a look at the cover. Is the child leading us away from the manger, looking back to the baby Jesus as he moves forward into the world? Or is he being led to the manger, the Word of God like a light upon his path bringing him to Jesus? I think the answer is yes! It is both.

As we prepare for Christmas we constantly travel back and forth. We come to Jesus to marvel at God's pure light, come into the world. And we go out into the world to share that light with others. This is my Christmas prayer for us at LCR: That we might continue to do both, never neglecting one for the other. That we live within the paradox of faith and works. That the light of Christ's love might continue to

draw us in and send us out. May the season of Advent stir up the fire and ignite our hearts.

We'll keep the light on for you. *Peace! Pastor Jeff*

Inside this Issue

Adult Faith	5
Children's Ministry ...	4
Confirmation	9
Council News	11
EDGE Youth	9
Fellowship	8
Ministry	3
Prayers	10
Stewardship	10, 11
Wee Wisdom	11
Worship	2

Follow Us On Social Media:

facebook

facebook.com/
ResurrectionMarion/

Instagram

instagram.com/
resurrectionmarion/

YouTube

https://tinyurl.com/
LCRYouTube

X x.com/lutheran_of

WORSHIP

~ two Sunday morning services - same message, different music styles ~

Sunday 8:30 am - Traditional Worship | Sunday 10:30 am - Contemporary Worship

Wednesday service: casual evening gathering with its own message + music from a range of worship styles

Wednesday 6:00 pm - Evening Worship

Links are available on our website and social media sites for **Livestream Worship**.

You can receive **email alerts** from LCR about worship and other news.

Click on the 'Visitor Info Request' tab our homepage to sign up - https://www.lcrmarion.org/new_visitor.html

Alternately, you can contact us at the church office and we will sign you up:

319.377.4689 or office@lcrmarion.org.

Text Notifications - Worship services and other events are subject to change due to a variety of circumstances.

If you would like text notifications of schedule changes / cancellations, call the church office

(319.377.4689) and give us your name & cell number ~OR~ you can sign yourself up on our website -

<https://share.hsforms.com/181uDRkYnTRyGMmuwl3ZiDQ44ay4>

Everyone Has a Story to Tell

I turned on my amplifier and looked out over tables filled with people awaiting their dinner.

My friend Chris and I were about to share some worship music with residents of the Hiawatha Care Center.

As Chris began singing the first song, I was struck by a lady at the front table who seemed to be singing along.

She was in a wheelchair and a device propped up her neck. As the evening progressed I continued to see her arm raising and lowering to the words... she was worshipping with everything she had.

After we finished the last song, Chris and I spent some time visiting with the residents.

I made my way over to her table and asked, "Did you know all of the songs we were singing today?"

She smiled and replied, "I listen to worship music on YouTube all day in my room."

I had come to the assisted living facility to share God's love and encouragement, but as I left, I felt inspired by the lady who worshiped all day long.

I was reminded of this story based on Pastor Jeff's recent sermon on sharing your testimony. We all have a faith story to share, and sometimes simple acts like raising our hands in praise and singing can share that with others.

Will you take a bold step and share your testimony with a friend or family member this Christmas season?

- Ralph Kendrick, Contemporary Worship Leader

Sunday December 28, ONE WORSHIP at 10:00 AM

... with Holiday Cookie fellowship to follow

On the Sunday after Christmas, we will have

one JOYOUS worship of Lessons and Carols at 10:00 am.

Christmas Eve is an exciting time at LCR, there will be lots of people and lots of energy as we gather together. On the Sunday after Christmas when the world has opened its presents and the crowds have subsided, we'll come together to celebrate the birth of Jesus by singing lots of carols and hearing once again the story of our Lord's birth. Christmas is not just one night, but lasts 12 days. Afterwards, we invite you to join us for a Cookie Potluck! Bring your favorite Christmas cookies to share and let's spend some time together as we continue to celebrate the joy of the new born king!



MINISTRY



We are once again supporting 12 local families by purchasing Christmas gifts. Pick up a handout or an ornament off the tree near the church entrance, or go online to [LCRMarion.org](https://www.signupgenius.com/go/904044CA8AD2EA7FA7-60293749-lcrholiday#/) for more info about how to purchase gifts.

Gifts are due December 7th.

Signup online to purchase gifts:

<https://www.signupgenius.com/>

[go/904044CA8AD2EA7FA7-60293749-lcrholiday#/](https://www.signupgenius.com/go/904044CA8AD2EA7FA7-60293749-lcrholiday#/)

Winter Scarves & Hats

LCR's Knitters & Crocheters Group recently donated over **140 scarves and hats** to Families Helping Families of Iowa. It is wonderful being able to donate to their cause of supporting kids and families in the foster care system! If anyone wants to donate their time to making scarves or hats outside of our Thursday night group, we would love to encourage them. We have yarn to share! Contact Pam at...

PamKacena@yahoo.com

Help us update the online directory

Sunday, December. 14 from 9:30 - 10:30 am

A graphic for "LCR Portraits" featuring three photos of people. Text includes: "Sessions Available LCR Library 9:30 - 10:30 am, November 30 and December 14". A starburst says "FREE". Text says "Help us update our church directory! 100% FREE!". A box says "First Come, First Serve! You will receive FREE digital copies of your portraits!". An illustration shows a person sitting in a chair being photographed.

October Blood Drive

At our recent Marion Lutheran Churches Blood Drive, we collected 35 lifesaving blood products, which go to support local hospitals. Thanks to all who donated!

Highlights from the drive:

Marlys Claussen – made her 100th donation, which was also her 5th donation of 2025

Dan Tegtmeier – made his 8th donation = 1 gallon

Pam Brown - Was deferred, but went home and recruited her husband to come donate in her place

You should know:

ImpactLife Blood Center runs our mobile blood drives and is now using a non-invasive testing device that eliminates the need for a finger prick in pre-screening. The device has a sensor that shines light through the skin to detect hemoglobin level. This is necessary to see if you're eligible to give blood.

Nov & Dec Mission Envelopes

...will benefit **Catherine McAuley Center**, a local non-profit that serves adult learners, refugee & immigrant populations, and women with educational needs. Find out more about this valuable organization at <https://cmc-cr.org/>

Help us beautify the Sanctuary for Christmas Eve

We are ordering red and white poinsettias to decorate the sanctuary. They cost \$10 per plant.

If you would like to order one in memory or in honor of a loved one, fill out a green form by Wed. 12/17.

You are welcome to take your plant home any time after the 7 pm service on Christmas Eve.

A graphic with a background of green leaves and red berries. Large text says "Poinsettia Orders". Below it, a box says "\$10/Plant Orders due December 17 Sign up at LCRMarion.org or fill out a green form". A QR code is in the bottom right corner.

CHILDREN'S MINISTRY @ LCR

Sunday School

Dec 7th	Sunday School (Christmas Program Practice)
Dec 14th	Sunday School (Last Christmas Program Practice)
Dec 21st	Sunday School (Christmas Party!!)
Dec 28th	No Sunday School
Jan 4th	No Sunday School

Wednesday Night Live

Dec 3rd	Regular WNL
Dec 10th	Regular WNL
Dec 17th	WNL Christmas Party!
Dec 24th	No WNL
Dec 31st	No WNL

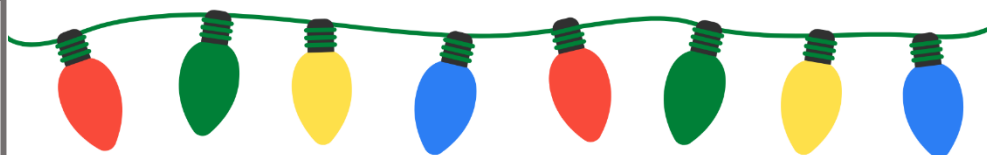


At Sunday School, we finished up a unit on Psalm 23 with science, games and crafts rotations thanks to the help of many extra volunteers! At WNL in November, we had a great conversation about Stewardship with Pastor Nate (we were blown away by their careful and grace-filled thoughts!) and made cards to send to homebound members of the church.

CHRISTMAS PROGRAM

December 14th at 4:30 pm
Mac & Cheese dinner
to follow

We have over 50 kids planning to join our program, you won't want to miss this! Featuring the SS students, Children's Choir, Wee Wisdom kids and even our middle & high school youth!



lcr childrens ministry presents

LET THERE BE LIGHT!

a christmas program featuring the light of our Lord

december 14th | 4:30pm

mac and cheese buffet to follow

ADULT DISCIPLESHIP

Women Of the New Testament: Rediscovering their voices

St. Luke may have been dripping with irony when he told us that the witness of the women to the resurrection seemed to the disciples to be nothing but ‘an idle tale!’ In fact, the salvation story of Jesus begins with extraordinary women (Elizabeth and Mary) and it is Jesus’ interactions with women that lead to some of the Gospels most profound moments. Join us on Sunday mornings this fall as we lift up and explore the women of the New Testament. We’ll look at those who are big names, and the nameless as well, as we explore the impact of women in the New Testament. This adult study meets in the conference room on **Sundays from 9:40 - 10:30 am.**

Sunday Morning Bible Study
9:40 am - Conference Room
Begins September 14

WOMEN
of the
NEW TESTAMENT



Pastors Scripture Study

There is no better way to prepare for worship than to be in conversation with the scriptures. Your thoughts and insights will help enlighten the pastors’ weekly sermons and prepare you to get more out of worship. We meet **each Wednesday at 11:00 am** in the fellowship hall.

Pastor Jeff’s One-Minute Devotionals -

You can view these brief, thought-provoking videos online **at any time** <https://tinyurl.com/PrJeffDevotional>

Resurrection Small Groups

Donna Dennis - mixed group; **2nd & 4th Thursdays at 6:30 pm**; conference room

Email Donna: donnakdennis88(at)gmail.com

Rebecca Mary Martha Circle - women’s group; **first Wednesday each month at 1:00 pm**

Email Lareen: clgull57(at)yahoo.com | conference room

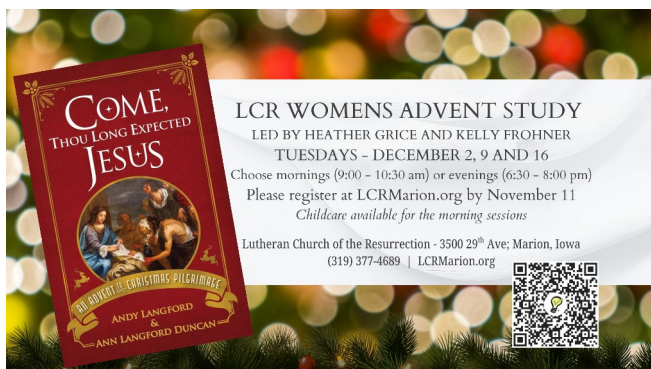
JAM Study Group - women’s group; **2nd Monday of each month**; conference room

Email Linda: lhayward495(at)yahoo.com; “Christianity’s Family Tree”



Mary Kay Pinckney - Our small group holiday get-together is on **Saturday, December 20th at 11:30 AM**

at Odd Mama’s Vintage Cafe in the NewBo district. Come meet our awesome women as we celebrate this joyous season and talk over what our next study will be. Email Mary Kay: mkpink6(at)gmail.com



LCR has had a couple very popular short-term studies this fall.
What subjects would you like to explore in 2026?

FELLOWSHIP

LCR Scrapbookers

Bring your photos, tools, and albums and join us for a day of creative fun from **9 am to 5 pm on Saturday, December 6th**. We'll be working in the Youth Activity Center (back of the church) this time, without access to the kitchen. So bring your favorite (non-alcoholic) beverage and a few dollars - we'll order pizzas for lunch. If your creativity extends to card making or sewing, you are invited, too! Email Donna if you have questions - donnakdennis88@gmail.com

LCR Book Club

We'll meet on **Tuesday, December 9th at 6:30 pm** to discuss "The Storm We Made" by Vanessa Chan. *For Cecily in Malaya, 1945, the stakes have never been higher - her teenage son has disappeared, her younger daughter is confined in a basement, and her older daughter works in a tea house frequented by drunken soldiers. Cecily knows two things: that this is all her fault, and that her family must never learn the truth.* Contact Mary to get on our email list; new people are very welcome! [jonmaryhajek\(at\)gmail.com](mailto:jonmaryhajek(at)gmail.com)

Painting Group

Love to paint? Want to learn? Join us on the **1st & 3rd Tuesdays of each month at 6:30 pm** in the art room. This group is open to adults painting in a variety of mediums - acrylic, watercolor, oils, etc. If you have questions, or if you haven't painted before, please contact Evelyn: [ebeck\(at\)jimonmail.com](mailto:ebeck(at)jimonmail.com)

Wood Carvers & Yarn Crafters

Carvers and knitters/crocheters both went on winter hiatus in November. Knitters group will resume in early April and carvers some time in March. Feel free to contact John or Pam over the winter if you need supplies, patterns, or advice. Knitters, please check out the item on page 3 of this newsletter about a winter hat & scarf opportunity.

carving
[john1400\(at\)
q.com](mailto:john1400(at)q.com)

knitting
[PamKacena\(at\)
yahoo.com](mailto:PamKacena(at)yahoo.com)



SCRAPBOOKING DAY



**Saturday, December 6
9 am - 5 pm**

Bring Your Own Supplies

*Card Makers and Sewers
Also Welcome!*

Gatherings @ LCR

'Gatherings' is a place and time to hear and share stories and connect with others in our community. We have fascinating conversations on different topics every time. Join us **Friday, December 12th from noon to 1:00 pm**. Everyone is welcome and beverages and light snacks are offered. Email Mary with questions: [jonmaryhajek\(at\)gmail.com](mailto:jonmaryhajek(at)gmail.com)

Walking Group

We walk **each Thursday at 10:00 am** at Lindale Mall. Make sure to get on our email list so you'll know where to meet us!

[volunteerLCR\(at\)lcrmarion.org](mailto:volunteerLCR(at)lcrmarion.org)

Cribbage Group

Join us on **2nd & 4th Fridays at 1:15 pm** for a few games of cribbage. We are happy to teach you if you've never played before and non-members are always welcome.

Candy Bar Bingo

When you get your shiny new 2026 calendar, make sure to note these dates for our fun Bingo get-togethers - **Jan. 4th, Feb. 1st, Mar. 1st, Apr. 12th**. Free for all ages; tell your friends to come, too!

PEP 55+ Fellowship Group

We're taking the month of December off, but will be back in January with a program on Habitat for Humanity. What fun and/or interesting things do you want to explore in 2026 with our great group? Talk to Sharon and we'll see if we can make them happen.

CONFIRMATION

In December, Confirmation students will be learning more about the Creed. As we work our way through the articles, we'll have the kids talk with parents and guardians about faith in their own families.

Creed - Article 2 (Redemption)

Family Focus:

Watch a Jesus-centered film and discuss salvation

Creed - Article 3 (Sanctification)

Family Focus:

Talk about the Holy Spirit's work in your lives

Lord's Prayer (Intro - 3rd Petition)

Family Focus:

Pray the Lord's Prayer together daily

Confirmation
Service 5/24/26

We'll have a Confirmation Christmas party on **Wednesday, December 17th at 7:15 pm.** After that we'll be on break for a couple weeks, and get back together in January.

7TH-12TH GRADE

Sunday Fellowship

9:40-10:25 am in the YAC

7th to 12th graders gather **between worship services on Sunday** to share in a time of fellowship. Together we play games, talk about life, and make treats. You are invited and welcome to join us during any of our Sunday morning meetings.



EDGE YOUTH

We had a lot to be thankful for at EDGE in November and are looking forward to spending more time in fellowship this month. EDGE is open to all high schoolers on a come as you are, when you can basis. A meal is always served. Doors open at 7:00 pm; programming begins at 7:30 pm and concludes at 9 o'clock.

Upcoming Events

12/3 | EDGE Topic: Hope & Love

12/10 | EDGE Topic: Joy & Peace

12/17 | EDGE Christmas GLOW Party

12/21 | Boardgames & Lunch (12 Noon - 2:30 pm)

Need a break? Join us for a fun and relaxing weekend!

January 16-18 "Rest, Rage, & Recharge Retreat"

Christian Conference Center, Newton, Iowa

Cost is \$40, and transportation is provided.

Register by January 2nd! Talk to Hannah or register at <https://www.iowaepiscopal.org/children-youth>



If you would like to receive our regular high school ministry email updates, please make sure your teen is registered for EDGE here:

<https://lcrmarion.org/ministries/youth-ministry.html>

Our Confirmation students share so many great insights during our Wednesday discussions. ↓



PRAYERS

Those hospitalized recently: Melissa Alexander

Those experiencing illness or surgery:

(LCR members) Pam Couser, Julie Gilmore, Mary Durspek, Betty & Gary Young, Eloise Heppler

(family and friends) Allison Mastroddi, Eddy Lee, Melody Yost, Julie Biddle, Kim Richardson, Sandy Lee, Lynn Burrell

Please let the office know about prayer needs
or when you wish to have a name removed.

The names of friends and family who are dealing with illness will be listed for 2 months.

Those living in care facilities:

Bernadean Spilde (Closer Care), Larry Wogahn (The Views), Marge Dryden (Terrace Glen), Everett Lehrman (Grand Living)

Those who mourn:

Jeanne Isaacs on the death of her mother Joan Harnagel
Lareen Gull & Julie Gilmore on the death of their sister & aunt, Judy Olson

Pastoral Care - With rules about confidentiality at our hospitals, we will not know that you or your family member is sick or in need unless you contact the church office.

STEWARDSHIP

IGNITE - Thank you for your Stewardship

Did you get your commitment card in?

Thank you for everyone who has taken the time to prayerfully consider how it is that your stewardship is a reflection of encountering the life-giving message of Jesus Christ. We are all called to support the ministry of the Gospel and we appreciate how you use your time, talents, and finances here at LCR. Remember the success of our campaign is based on your response, please turn in the Commitment Card to the office. If you are unable to put down a specific commitment at this time, please still turn in your card. We want to make sure that everyone has had a chance to look at the IGNITE packet and feels the excitement of what God is doing in our midst.

If you haven't received a large white envelope with the material, call the church office so we can send you a copy OR you can see everything online at <https://www.lcrmarion.org/stewardship.html>



What is a Master Plan and Why is the Church Council looking at this?

A master plan is more than a drawing - it is a tool that helps a church steward its resources wisely, make improvements based on our mission, and ensures that a thoughtful and comprehensive road map is available for future growth. In short, a master plan helps us make sure that our facilities and infrastructure support our purpose and mission and not limit our ability to do ministry.

MASTER PLAN



A master plan helps a congregation identify immediate needs, plan for mid-range improvements, and looks toward future possibilities in a way that each step supports the one before it. It allows us to look at how we utilize our current space, where there are issues of flow, accessibility, safety, and prevent costly mistakes when it comes to addressing improvements. A master plan anticipates future needs and current technology so that a church doesn't find itself reacting to issues, but purposely navigating into the future.

Finally, a master plan takes into account EVERYONE's insight and experiences. The Council hopes to have a recommendation in regard to the development of an "LCR Master Plan" this January.

STEWARDSHIP

Treasurer's Report for October 2025

	<u>October</u>	<u>Year to Date</u>	<u>One Year Ago</u>
Receipts	\$73,944	\$814,192	\$700,000
Expenditures	\$100,374	\$779,788	\$703,791
<u>Cash Balances</u>	<u>10/31/25</u>		<u>10/31/24</u>
General Fund	\$140,730		\$138,629
Property Reserve	\$80,868		\$79,113
Savings	\$367,293		\$256,268

Thank you for your faithful gifts in support of our budget.

Digital Giving

* **Simply Giving** - Join 86 LCR members who give regularly through automatic drafts from their checking or savings accounts. You can elect to give weekly, monthly, or quarterly. Enrollment forms are available in the info rack in the gathering space.

* **PayPal** - Click DONATE button on our website for online giving.

* **Venmo** - Smartphone app for sharing money @LCRMarion

Wee Wisdom

In November, we explored all the changes we've been seeing outside. Our Science Center was all about pine cones, acorns, and leaves. We're really enjoying our morning walks, so fun when we are cozy in our hats & mittens. We have been working on putting on our own jackets. Ask our students about the 'jacket flip trick' - Hood by the toes / Over the head it goes! We focused this month on thankfulness and what we can do for others. We encouraged everyone to bring in a canned food item for our community food pantry. We are still welcoming Hy-Vee receipts. So far we have raised \$150, and would love to reach our goal of \$800. *Thank you for all the ways you support Wee Wisdom.*



CHURCH COUNCIL

Please reach out with questions or concerns.

The Council met on Tuesday, November 18, 2025.
October Secretary & Treasurer reports were approved.
Auditing Committee report was presented to council.

Treasurer: October finished over budget due to parking lot repair bill.

Pastor Jeff: New Members - LCR will welcome 15 family units on November 30. Advent - Advent theme will be "Light The Way" and offerings will support 4 local organizations.

Outreach: First Bingo was a success with about 45 participants. No Bingo in December.

Property: Plumbing assessment concluded that water heater needs replaced, and recommends drain cleaning service.

Governance: Will have draft of employee manual ready to review at December council meeting.

Wee Wisdom: Hy-Vee receipt funds will be used for new classroom materials.

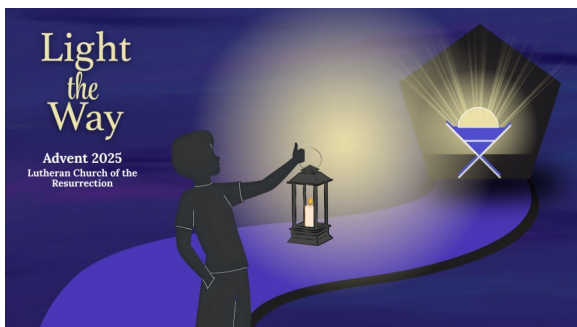
Old Business: *Long Range Planning* - Committee has met with 4 architecture firms and narrowed down to 2, which will present again to a larger committee. Reminder that the purpose is only to develop a master plan. *Budget* - Preliminary 2026 budget plan was presented to council.

New Business: *Proposed meeting dates:*
Budget Forum (1/18) and Annual Meeting (1/25)

Next meeting: *Tuesday, December 16, 2025*
Agenda items should be submitted by 12/8/25.
Print copies of council minutes and treasurer's reports are available in the church office binder.

LUTHERAN CHURCH
of the RESURRECTION
3500 - 29TH AVENUE
MARION IA 52302

(address service requested)



NON-PROFIT
ORG.
U.S. POSTAGE
PAID
Marion, Iowa
Permit #11



CONTACT US!

office hours:

Monday - Friday,

9:00 am - 4:00 pm

phone: 319-377-4689

email: office@lcrmarion.org

fax: 319-377-4680

www.lcrmarion.org

Pastor Jeff Frohner - PastorJeff@lcrmarion.org
Pastor Nate Montover - PastorNate@lcrmarion.org
Childrens/MS Ministry: Jessi Lau - childrens@lcrmarion.org
HS Ministry: Hannah Sh. Powell - youth@lcrmarion.org
Contemp. Worship: Ralph Kendrick - worship@lcrmarion.org
Office Manager: Kim Benser - business@lcrmarion.org
Marcia Edwards - volunteer@lcrmarion.org
Emily Carson - secretary@lcrmarion.org
Cari Redondo - communications@lcrmarion.org
Lorie Smith - bookkeeper@lcrmarion.org
Custodians: Dave Steifner, Dave Cosgrove

